



Inner Niger Delta, Mali

Cattle in wetlands

By supporting local, regional and international stakeholders, WPS aims to prevent and reduce water-related conflict and turn the vicious cycle of water challenges and instability into a virtuous one of sustainable water management and peace.

WATER-RELATED SECURITY CHALLENGES

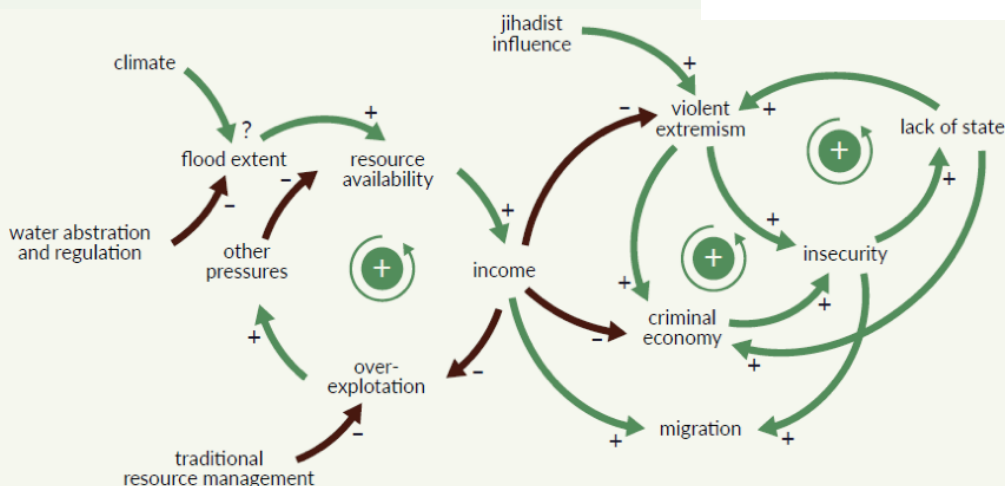
The Inner Niger Delta, in Mali, is one of the largest wetlands in the world. Here, farmers, fishermen, and herders compete for the flood-plain's ecosystem services, which leads to conflicts. Climate shocks and population growth sometimes worsen these disputes, causing fatalities in the Mopti, Djenné, and Konna districts of Mali.

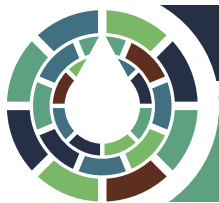
WPS ENGAGEMENT

Launched as a pilot in 2018 and expanded in 2020, WPS in Mali has worked with stakeholders in the Inner Niger Delta to mitigate water-related conflicts. Using modelling information and building on many years of networking and platform building, WPS raises awareness and builds capacities for evidence-based conflict prevention. Climate scenarios have been analyzed, and stakeholders facilitated to propose interventions through a participatory process.



Community-led dialogue





Inner Niger Delta, Mali

LOCAL INVOLVEMENT IN WATER MANAGEMENT

WPS efforts in Djenné, Konna and Mopti regions have involved local stakeholders in the development of agreements on fisheries and the management of the communal fisheries council, reducing tension and conflict. The progress made proves that sustainable water management is possible through dialogue, cooperation and the restoration of ancestral practices.



Pondorie dam, Djenné

MODIFICATION OF THE PONDORIE DAM OPERATING POLICY

The dam's operation was adjusted to address competing demands from fishermen and farmers, both upstream and downstream, in the Djenné district, as their water-level needs conflict. Following a January 2022 dialogue, the two groups agreed to a modified policy, significantly reducing tensions.



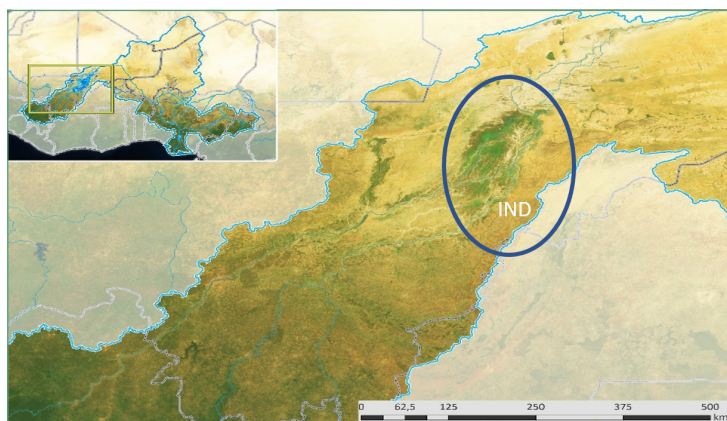
Demarcation post of the route of livestock crossing the Niger river

DEMARICATION OF ROUTES FOR LIVESTOCK

Frequent conflicts between herders and farmers in Djenné over pastoral tracks to the river have been resolved through WPS engagement, leading to an agreement on designated routes for animals. Similar agreements among pastoralists, sand miners and fishermen in Mopti have also reduced tensions and conflicts significantly.

WPS-GIZ COLLABORATION VIA FREXUS PROJECT

WPS and GIZ collaborated on the German-funded Frexus project in Mali, Chad, and Niger, enhancing system understanding and stakeholder dialogue. This joint effort improved governance and resource management, reducing conflict considerably.



Map of Inner Niger Delta

FOR MORE INFORMATION

www.waterpeacesecurity.org

info@waterpeacesecurity.org

@WaterPeaceSec

Water, Peace and Security

WPS is a collaboration between the Netherlands Ministry of Foreign Affairs and a consortium of six partners: IHE Delft (lead partner), World Resources Institute (WRI), Deltares, The Hague Centre for Strategic Studies (HCSS), Wetlands International and International Alert.